

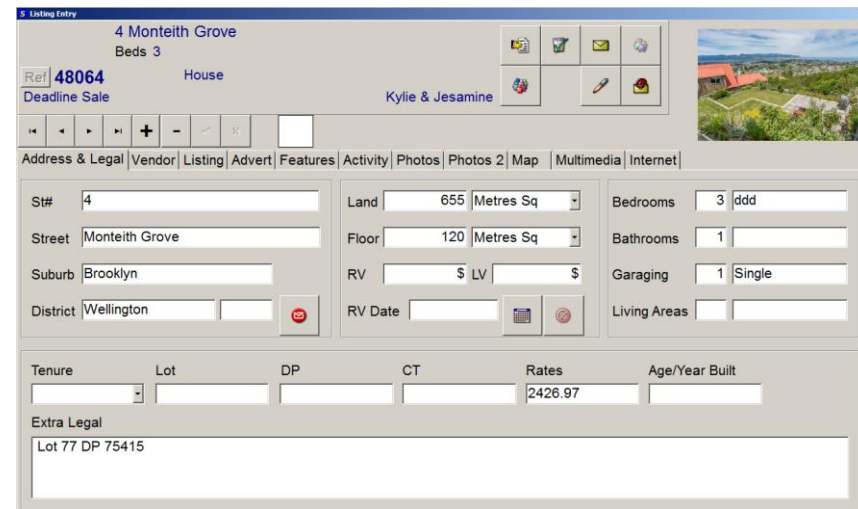
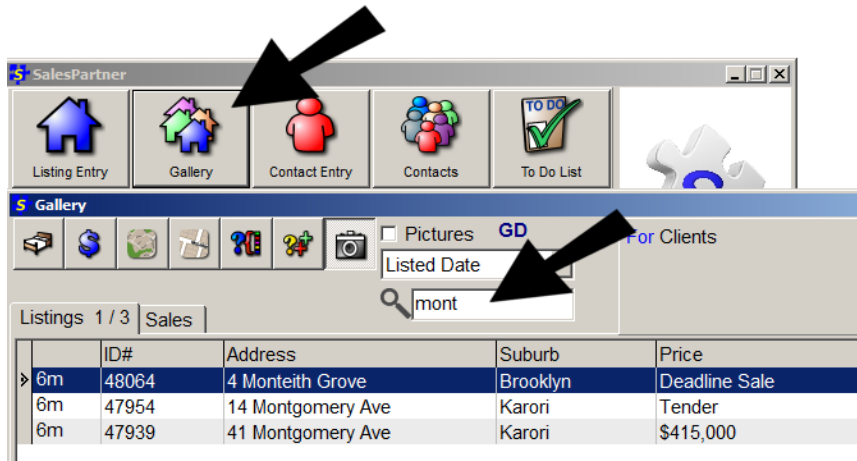


# 3 Column Flyers

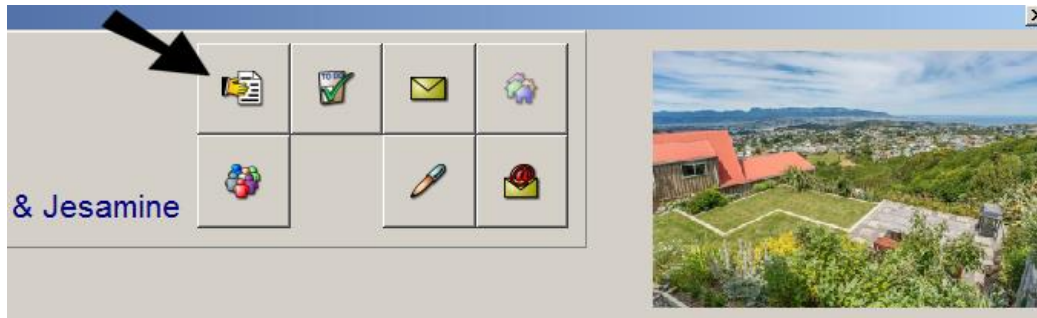
Print brochures

## Open The Gallery

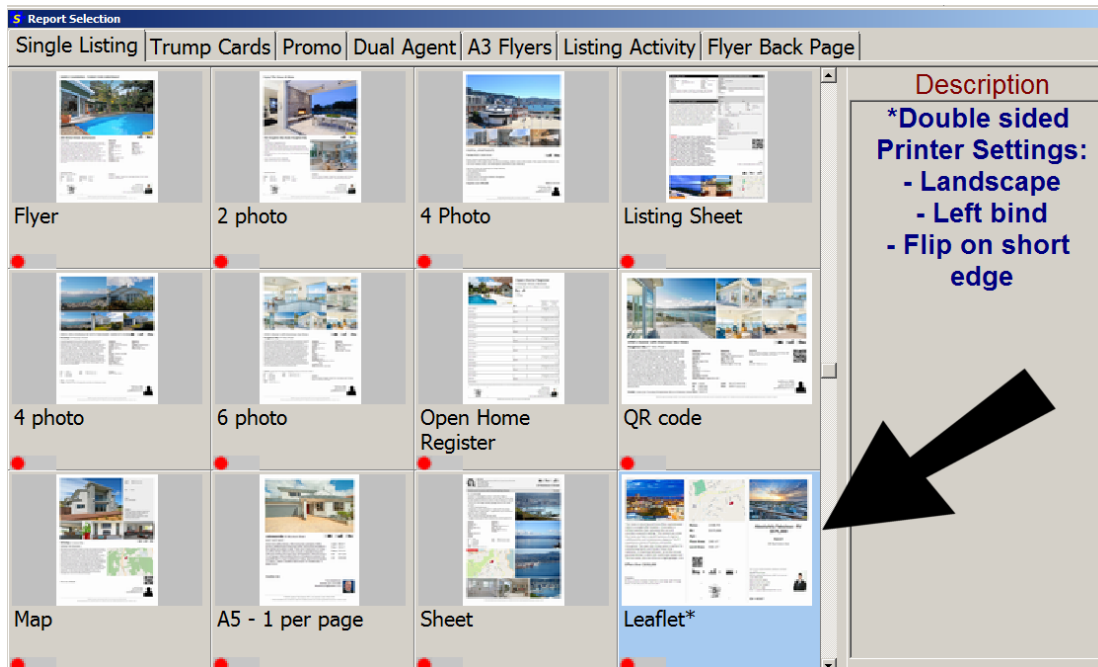
- Enter the street or suburb of the Listing you are looking for.
- Double click into the Listing



Click into reports 



Double click on the **Leaflet** option



Click Print



BEO \$499,000. This modern 3 bedroom home includes multiple flat lawns, indoor/outdoor flow to an enormous deck and panoramic views of the harbour and South Coast. Features include: \* Three double bedrooms, open plan living, single garage \* Fully updated throughout with new bathroom and a stunning new kitchen with granite benchtops \* Great outdoor entertaining spaces - tiered flat lawns and a huge deck - perfect for summer barbeques \* Enjoy incredible 270 degree panoramic sea views \* Many walking and popular mountain biking trails nearby \* Just a few minutes drive to the city. This represents exceptional value for a fully renovated home with sea views that is close to the central city. Ready to enjoy immediately! View this property to avoid missing out. Visit [www.capitalproperty.co.nz](http://www.capitalproperty.co.nz) for more photos & info!

\$

**Rates** 2426.97

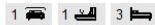
**Floor** 120 m<sup>2</sup> more or less

**Land** 655 m<sup>2</sup> more or less

## Brooklyn

4 Monteith Grove

Modern Home - Panoramic Sea Views



**Deadline Sale**

**Geoff Duncan**

RE/MAX Leaders Real Estate (1987) Ltd Licensed Under REAA 2008

Work: 04 471 1849

Mobile: 027 271 1274

[geoff@salespartner.co.nz](mailto:geoff@salespartner.co.nz)



While we have taken care to compile this report from reliable sources we are unable to guarantee the accuracy in whole or in part.

Check your printer settings.

- ✓ Landscape
- ✓ Double sided – Choose **Flip on Short Edge**, otherwise known as **Left Binding**

